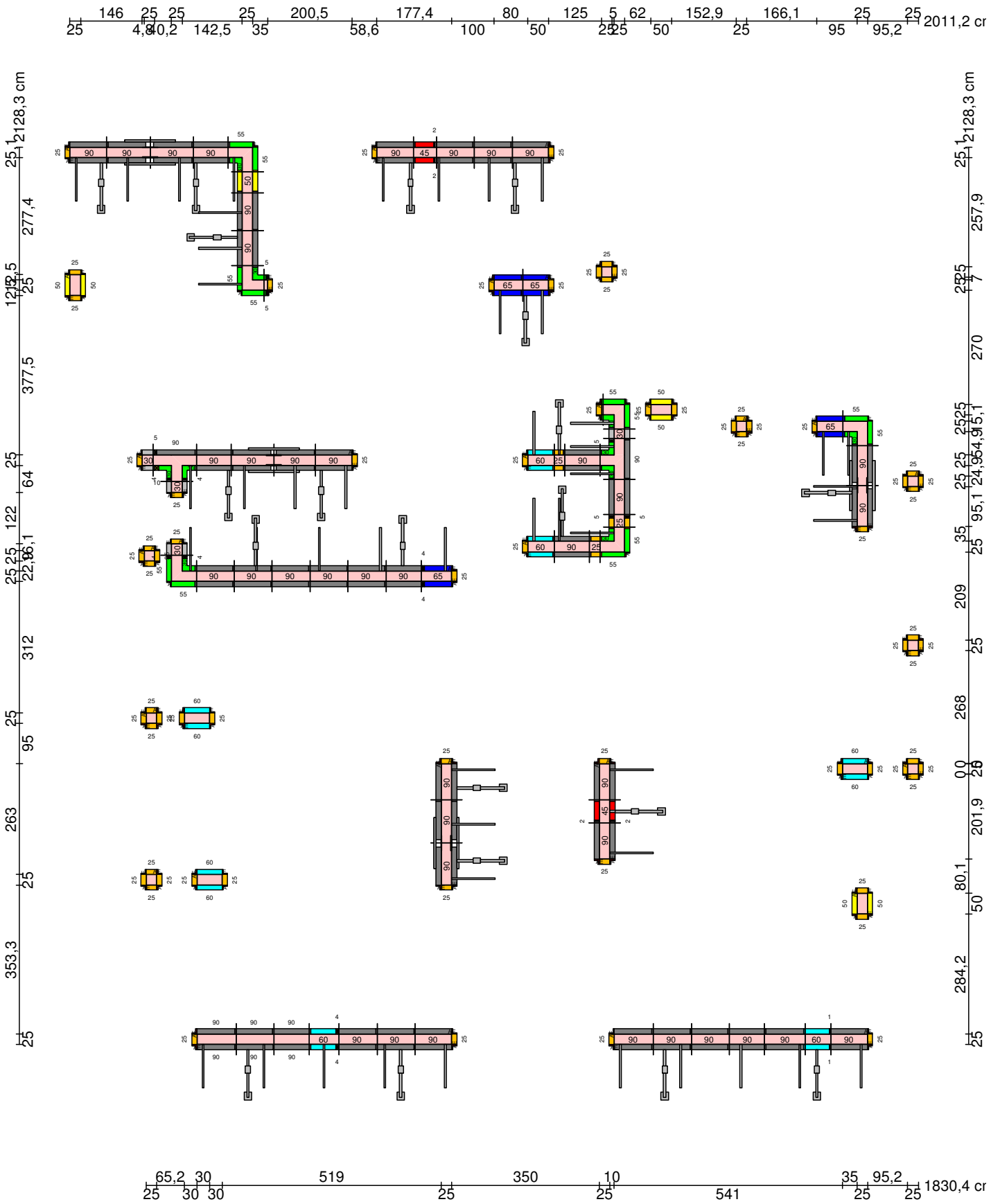


Pour 1



Scale 1:124 Plan Sect. Ht. 10cm

Material list Pour 1

Code	Description	Pour 1
Elements		
A0227090	Shuttering board MIDI BOX 90x270	86
A0227065	Shuttering board MIDI BOX 65x270	8
A0227060	Shuttering board MIDI BOX 60x270	14
A0227055	Shuttering board MIDI BOX 55x270	12
A0227050	Shuttering board MIDI BOX 50x270	8
A0227045	Shuttering board MIDI BOX 45x270	4
A0227030	Shuttering board MIDI BOX 30x270	8
A0227025	Shuttering board MIDI BOX 25x270	74
A0636270	Complementary insertion bar 36x270	8
A0516270	Internal corner 30x30x270	10
A0515270	External angle 12,1x12,1x270	110
Accessories		
A0901260	Boarding lock Midi Box 260	868
A0815000	Centring bowstring	550
A0960001	Stiffening beam	16
A2510100	Flanged nut 100mm	32
A2510070	Flanged nut 70mm	194
A2530120	Nut with tilt socket square	42
A0815075	Bowstring (also called through stay) L=75	118
A2545020	Sealing cone (pcv)	236
A0951000	Working platform's bracket	50
A0904001	Tilt support	20
A0920001	Tightener 300	32
A0970002	Working platform post	50
A2532100	Centring nut	550
A0909000	Transportation lifting sling	1
Others		
R25,1	PVC pipe 25,1 cm (supplied by customer)	16
R25,0	PVC pipe 25 cm (supplied by customer)	102
H20;2700	Board 2 x 12 x 270 cm	4
H100;2700	Board 10 x 12 x 270 cm	1
H50;2700	Board 5 x 12 x 270 cm	5
H50;2500	Board 5 x 12 x 250 cm	1
H40;2760	Board 4 x 12 x 276 cm	1
H10;2700	Board 1 x 12 x 270 cm	2
H40;2700	Board 4 x 12 x 270 cm	7

Information on pours Pour 1 to 1

Information	Pour 1	Total quantity
Concrete Surface Area	331,05 Sqm	331,05 Sqm
Formwork Area	359,59 Sqm	359,59 Sqm
Utilization	100 %	100 %
Concrete Volume	34,19 Cbm	34,19 Cbm
Running Feet	55,908 m	55,908 m
Wall Height	250,0 cm	250,0 cm
Weight of formwork	21564,5 Kg	21564,5 Kg